

Perfect Evening Earrings

Beadweaving Tutorial by
NEDbeads



*Three Earring Designs in One - Personal and Commercial Use
Tutorial*

LEGALESE

NEDbeads reserves all rights to this design, written, photographic and illustrated. The tutorial is intended for personal and commercial use and finished items made from this tutorial may be sold as long as they are not mass produced. Do not copy or teach this tutorial, nor disseminate it in any manner including electronic, without written permission from the author.

When selling finished work or if you post pictures of your work on the internet, design credit would be much appreciated!

Tools Needed For This Design:

Scissors

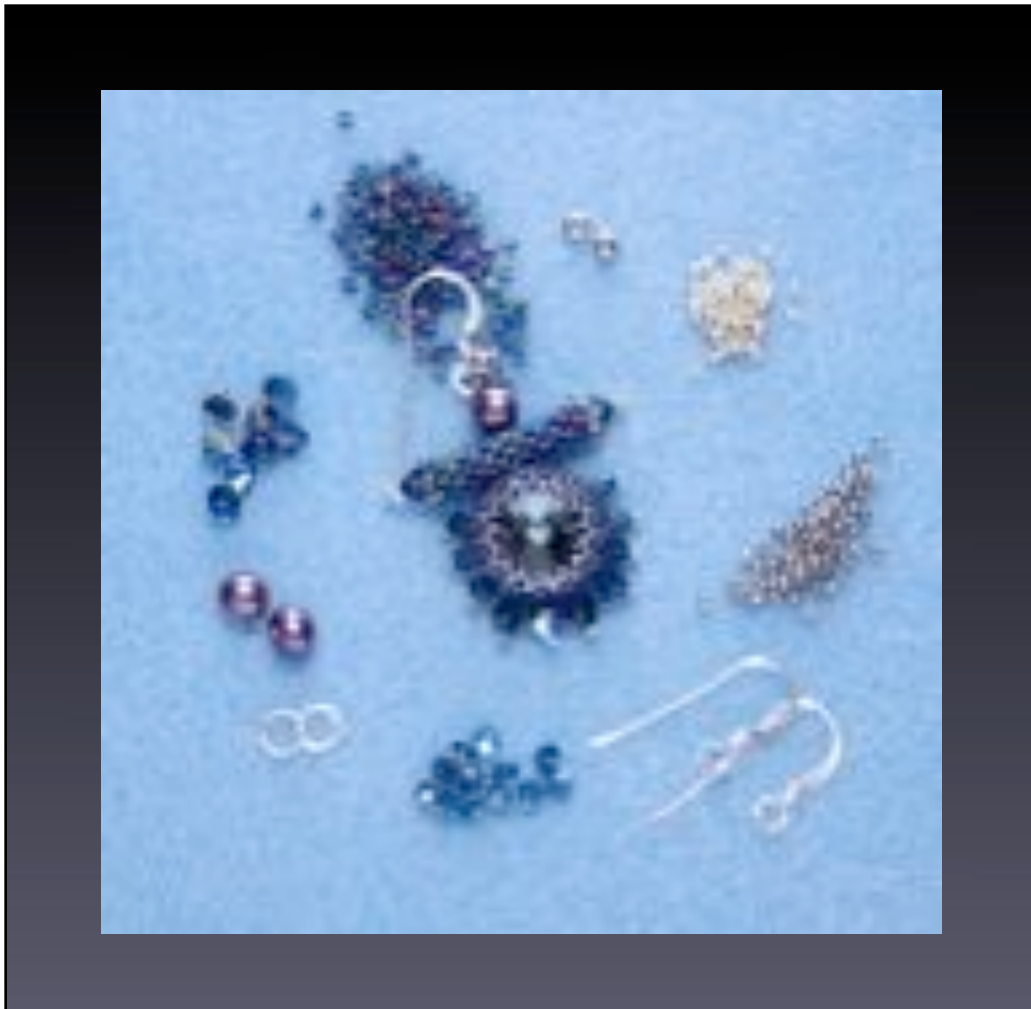
Thread (I use Fireline 6lb)

Needles

Needle nose pliers (for manipulating the jump rings)

Materials list

- 2-3 grams of size 11 cylinder beads (I used DB871) - A Beads
- 1 gram 15 Japanese rocailles (I used steel, #464A) - B Beads
- 1 gram size 15 Czech charlottes (I used sterling silver) - C Beads
- 2 size 8 beads (I used steel)
- 2 12mm rivolis (I used seal)
- 2 5-6mm freshwater pearls
- 12 3mm crystals (I used Montana AB)
- 12 4mm crystals
- 2 5mm jump rings
- 2 ear wires



Bezeling The Rivolis

- 1) Thread your needle with two wingspans of thread, and pick up 30 A beads. Go through the first A bead again to form a circle; leave yourself a generous tail thread (approximately 9"). To keep your tension even, wrap your tail thread around the pinkie finger of your non dominant hand. This circle forms your first and second rows of tubular peyote.
- 2) Pick up an A bead, skip one bead in your base row, and go through the next. Repeat this all the way around your circle for Row 3. Step up through the first A added in this round.
- 3) Row 4: Pick up a B bead and sew through the next A. Continue around the circle, pulling tight after every three stitches so that your beadwork begins to cup up. Step up through the first B added in this round.
- 4) Row 5: Pick up a B bead and sew through the next B from the previous row. Continue around to complete this row and step up through the first B added in this round.





5) Row 6: Pick up a C bead and sew through the next B bead. Continue around the circle to complete this round. Instead of stepping up, reverse the direction of your needle and go through the B bead in the last row. Weave through your work to exit an 'up' A bead from the first row.



6) Pick up a B bead and sew through the next A bead; continue around to complete this round, but leave the tension loose for now. Step up through the first bead added in this round.

7) Insert a 12mm rivoli in the cup of your beadwork, foil side down, and tighten your stitches by pulling firmly. Hold your rivoli in place with the thumb of your non dominant hand while stitching the last row.



8) Pick up a B bead and sew through the next B bead from the previous row, and continue around, keeping firm tension as you stitch.

9) Weave through your work until your thread is exiting from a center A bead from the first row. Set your work aside for now. Follow steps 1-9 to make a second bezeled rivoli.

Creating the Peyote Tubes

1) Thread your needle with one and half wingspans of thread and pick up a B bead for a stop bead - leave yourself about 6" of tail thread - and go through the B bead again so that the thread is looped over it. Pick up 13 A beads. Working in odd count flat peyote stitch, weave 8 more rows, so that you have a total of ten rows. You will have five beads on each end of your strip.



2) Fold your work lengthwise, and do a circle stitch through the bead on the opposite side of your tube. Bring your needle back through the bead you started from, so that you're ready to stitch down the length of the tube and zip it up.



3) Without adding any beads, weave from one side to the other, going through 'up' beads on each side, zip the tube up. When you get to the end, make another circle stitch to close the last two beads together. Exit your thread out of one of the end beads, so that it's pointing away from your work.



4) Bring your needle all the way down through the tube. Pick up one 4mm crystal, three C beads, and go back down through the 4mm and the tube, so that your needle is now exiting the opposite end of the tube.



5) Pick up a 4mm crystal and 3 C beads. Go back down through the 4mm and needle into the tube. If you can, angle your needle so that you exit out through one of the A beads near the other end of the tube, and weave through to exit one of the edge A beads. If you can't get your needle to come through the beads, go ahead



and needle all the way through the tube and out the other end (avoid going through the crystal); weave your needle down into one of the A edge beads, and then back up through the next A bead.

- 6) Pick up one B bead, and go down through the A bead to the right of the bead you're exiting, and then up through the next A bead to the right. Working around the edge, add one B bead over each exposed thread between your A beads. Weave in your working thread and trim.



- 7) Remove your stop bead and thread a needle onto your tail thread. Repeat Step 6 for this end of the tube, and weave in and trim the thread. Following Steps 1-7, make another tube and set it aside.

Attaching the Components, Embellishing and Finishing

- 1) Returning to your rivoli, with your working thread exiting a Row 1 A bead on the bezel, pick up your tube and needle through the 7th bead (middle bead) of the tube, and through the next Row 1 A bead in the bezel of the rivoli.



- 2) Tighten this up nicely, and reverse your direction by needling through the B bead directly below the A bead you are exiting on the rivoli.



- 3) Go through the middle A bead and the next B bead.



- 4) Now reverse direction again, by going through the A bead directly above the B bead you're exiting.
- 5) Go through the 7th bead on the tube again, and through the A bead on the rivoli again.

- 6) Repeat Step 2 and Steps 3 and 4. Go through the 7th bead in the tube one more time; now, weave through the very next A above that bead on the tube. Reverse again by weaving through the A directly above.



- 7) Pick up one freshwater pearl, one B bead, one size 8 Metal bead, and one B bead. Skip the 15,8,15 and go back down through the pearl and back through the A bead you exited.



- 8) Turn your work over, and reverse your thread path by bringing your needle through the very next center A bead on the tube.



- 9) Reinforce your work by going up through the pearl and through the 15,8,15 again, and back down through the pearl. Go through the A you exited from again. Weave in your thread and trim.

- 10) Thread a needle onto the rivoli tail thread. Weave through the work until you are exiting from Row 1 - the center A, two center beads down from the connection point with the tube, on the right hand side.



- 11) Pick up one 3mm crystal and one C bead. Go back through the crystal and sew into the next Row 1 A bead. Repeat two more times, adding two more 3mm crystals along the side.



- 12) Pick up one 4mm crystal and one C bead. Go back through the crystal and through the next Row 1 A bead. Repeat three more times to add a total of 4 4mm crystals across the bottom arc of your rivoli.

- 13) Repeat Step 11, adding three more 3mm crystals, and then weave in your thread and trim.

- 14) Open your jump ring by twisting one side slightly forward the the other side slightly back. Slip the jump ring through the size 8 bead at the top, and add your ear wire on the ring as well (make sure it's facing the right way), and gently close the ring again. Slide the join down so that it is hidden in the size 8 bead. You're done!!





Variations

Variation 1

- Rivolis: To make earrings with size 14mm rivolis, pick up an initial row of 36 beads for your bezel, and follow the same series of steps for your bezel as shown for the 12mm, using the higher bead count; leave yourself slightly more of a tail thread for the embellishments.
- Tubes: To make a matching peyote tube, you will need to increase your bead count for the beginning row to 17 before you begin stitching.
- Embellishing: You will need a total of ten 3mm crystals and five 4mm crystals to complete these. When embellishing your rivoli, use four 3mm crystals, five 4mm crystals in the bottom arc, and four more 3mm crystals.

Variation 2

- Rivolis: To make earrings with two rivolis below your peyote tube, you will need two 12mm and two 14mm stones. Follow the directions to make the bezels for the 12mms, and increase the bead count to bezel the 14mm stones as shown in Variation 1.

- Tubes: Follow the instructions to make the two peyote tubes for earrings.

- Attaching and Embellishing: Follow steps 1-10 of Attaching the Components, Finishing for your 12mm rivolis.

- When you get to Step 11, you will add four 3mm crystals rather than three down the side of the 12mm rivoli. Now weave a side bead, a center bead, and a center bead more 3mm crystals. Weave in your thread and trim.



instructions to peyote tubes for earrings.

Embellishing: of Attaching the Embellishing and 12mm rivolis.

Step 11, you will crystals rather than side of the 12mm rivoli through a side bead, a side bead before adding four crystals. Weave in trim.

- Pick up your 14mm rivoli, and using the working thread (exiting a Row 1 A bead) needle through the middle bottom A bead of the Row 1 beads on the 12mm rivoli, and through the very next Row 1 bead on the 14mm. (You are attaching the two rivolis in the same manner you attached the peyote

tube; imagine that the bottom center bead of the 12mm rivoli is the center bead of the peyote tube, if that helps.) Follow the instructions for the original earrings to reinforce the join in the same manner you would for the peyote tube, and exit out of the Row 1 A beads on the 14mm stone.

- Weave down through the work until you are exiting Row 1 - the center A, two center beads down from the connection point to the 12mm rivoli, on the right hand side. Follow the instructions for embellishing the 14mm rivoli from Variation 1.